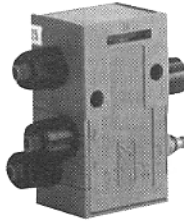
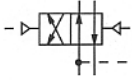




## Basic Catalog Pneumatics

## 4/2 Valves

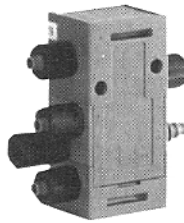
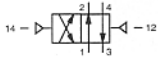
Type 840, 6x1 mm dia.  
Unistable.  
Qn = 200 NI/min.



| Connection port | Control pressure range | Code no.      |
|-----------------|------------------------|---------------|
| ∅ 6x1           | 1,5-10 bar             | 571 840 000 0 |

## 4/2 Valves

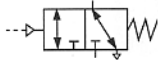
Type 840, 6x1 mm dia.  
Bistable.  
Qn = 200 NI/min.



| Connection port | Control pressure range | Code no.      |
|-----------------|------------------------|---------------|
| ∅ 6x1           | 1,8-10 bar             | 571 841 000 0 |

## 3/2 Valves

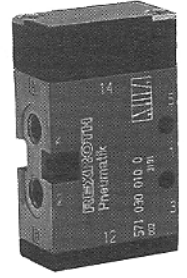
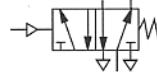
CD 4, G 1/8.  
Unistable.  
Qn = 900 NI/min.



| Connection port | Control pressure range | Code no.      |
|-----------------|------------------------|---------------|
| G 1/8           | 3,5-10 bar             | 571 020 010 0 |

## 5/2 Valves

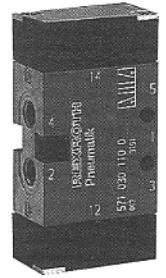
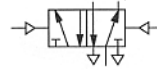
CD 4, G 1/8.  
Unistable.  
Qn = 900 NI/min.



| Connection port | Control pressure range | Code no.      |
|-----------------|------------------------|---------------|
| G 1/8           | 3,5-10 bar             | 571 030 010 0 |

## 5/2 Valves

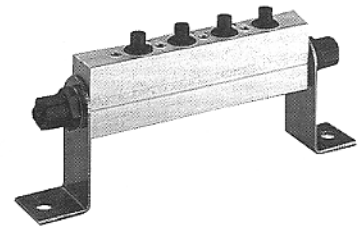
CD 4, G 1/8.  
Bistable.  
Qn = 900 NI/min.



| Connection port | Control pressure range | Code no.      |
|-----------------|------------------------|---------------|
| G 1/8           | 2-10 bar               | 571 030 110 0 |

## Accessories\*

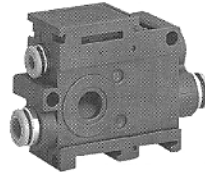
for CD 4, G 1/8.  
P-manifold  
for 5/2- and 5/3- valves.



| Connection port | No. of valves | Code no.      |
|-----------------|---------------|---------------|
| G 1/8           | 2             | 333 711 022 2 |
|                 | 3             | 333 711 023 2 |
|                 | 4             | 333 711 024 2 |
|                 | 5             | 333 711 025 2 |
|                 | 6             | 333 711 026 2 |
|                 | 7             | 333 711 027 2 |
|                 | 8             | 333 711 028 2 |
|                 | 9             | 333 711 029 2 |
|                 | 10            | 333 711 030 2 |
|                 | 11            | 333 711 031 2 |
|                 | 12            | 333 711 032 2 |

## 3/2-Way valve

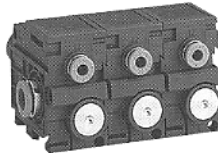
Series 579, ND 4.  
Single valve, normally closed.  
Qn = 850 NI/min.



| Pilot pressure range | Connection | Code no.      |
|----------------------|------------|---------------|
| 2-10 bar             | 6 x 1      | 579 440 000 0 |
| 2-10 bar             | 8 x 1      | 579 460 000 0 |

## 3/2-Way valve

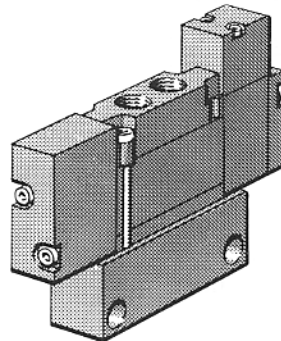
Series 579, ND 4.  
Valve unit, normally closed.  
Qn = 850 NI/min.



| Designation      | Pilot pressure range | Code no.      |
|------------------|----------------------|---------------|
| Inlet valve      | 2-10 bar             | 579 060 000 0 |
| Stacking valve   | 2-10 bar             | 579 160 000 0 |
| End valve        | 2-10 bar             | 579 260 000 0 |
| Air conn. module | 8x1                  | 579 000 009 2 |

## 5/2 Valves

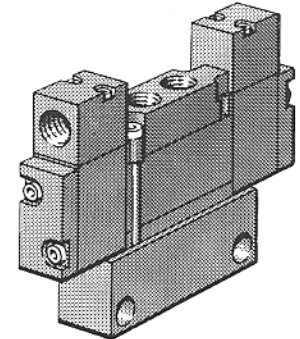
Series Compact 10, M 7.  
Unistable.  
Qn = 300 NI/min.



| Working pressure | Pilot pressure range | Code no.      |
|------------------|----------------------|---------------|
| -1 - 10 bar      | 3-7 bar              | 251 050 010 0 |

## 5/2 Valves

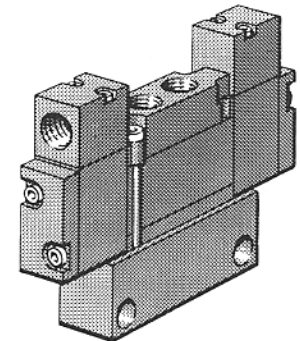
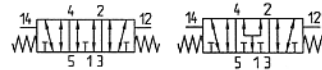
Series Compact 10, M 7.  
Bistable.  
Qn = 300 NI/min.



| Working pressure | Pilot pressure range | Code no.      |
|------------------|----------------------|---------------|
| -1 - 10 bar      | 1-7 bar              | 251 050 020 0 |

## 5/3 Valves

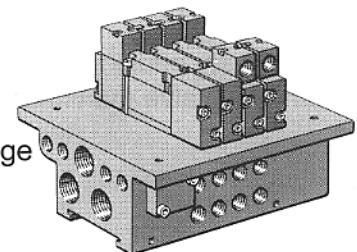
Series Compact 10, M 7.  
Qn = 250 NI/min.



| Working pressure | Mid.-pos | Code no.      |
|------------------|----------|---------------|
| -1 - 10 bar      | Closed   | 251 050 030 0 |
|                  | Open     | 251 050 040 0 |
|                  | Pressur. | 251 050 050 0 |

## Complete valve manifolds Info

Series Compact 10.  
Manifold is ordered with an even no. of valves, 4-20 pcs.  
For ordering, see configurator on our homepage on Internet.



| Connection  | Code no       |
|-------------|---------------|
| On one side | 251 020 000 0 |
| On the top  | 251 010 000 0 |

## 5/2 Unistable\*

Series Compact 10.

Valve prices

Code no. for addition to or as a spare for "Complete valve manifold".



| Connection  | Code no.      |
|-------------|---------------|
| On the top  | 251 019 010 0 |
| On one side | 251 029 010 0 |

## 5/2 Bistable\*

Series Compact 10.

Valve prices

Code no. for addition to or as a spare for "Complete valve manifold".

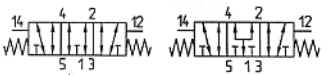
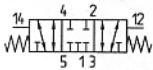


| Connection  | Code no.      |
|-------------|---------------|
| On the top  | 251 019 020 0 |
| On the side | 251 029 020 0 |

## 5/3 Valves\*

Series Compact 10.

Code no. for addition to or as a spare for "Complete valve manifold".

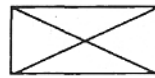


| Mid.-pos | Connection  | Code no.      |
|----------|-------------|---------------|
| Closed   | On the top  | 251 019 030 0 |
|          | On the side | 251 029 030 0 |
| Open     | On the top  | 251 019 040 0 |
|          | On the side | 251 029 040 0 |
| Pressur. | On the side | 251 019 050 0 |
|          | On the top  | 251 029 050 0 |

## Blanking plate\*

Price blanking plate

Code no. for addition to or as a spare for "Complete valve manifold".



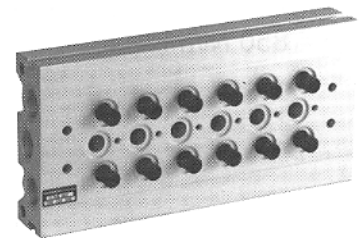
| Code no.      |
|---------------|
| 251 019 060 0 |

## Accessories\*

for CD 4, G 1/8.

Subplates

for 5/2- and 5/3- valves.

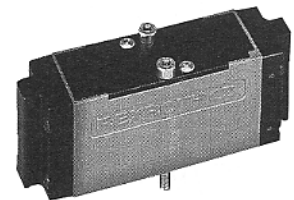


| Connection port | No. of valves | Code no.      |
|-----------------|---------------|---------------|
| G 1/8           | 4             | 898 507 004 2 |
|                 | 6             | 898 507 006 2 |
|                 | 8             | 898 507 008 2 |
|                 | 10            | 898 507 010 2 |
|                 | 12            | 898 507 012 2 |

## 5/2 Valves

CD 01, G 1/8.

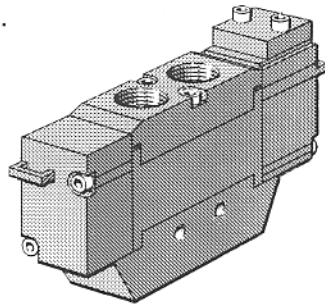
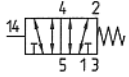
Qn = 750 NI/min.



| Connection port | Pilot pressure range | Function  | Code no.      |
|-----------------|----------------------|-----------|---------------|
| G 1/8           | 3-10 bar             | Unistable | 571 400 350 0 |
| G 1/8           | 2-10 bar             | Bistable  | 571 400 352 0 |

## 5/2 Valves

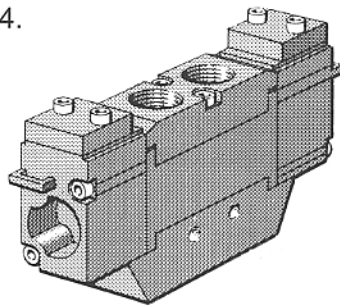
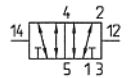
Series Compact 18, G 1/4.  
Unistable.  
Qn = 850 NI/min.



| Working pressure | Pilot pressure range | Code no.      |
|------------------|----------------------|---------------|
| -1 - 10 bar      | 3-10 bar             | 251 860 010 0 |

## 5/2 Valves

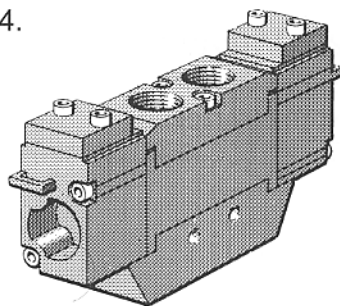
Series Compact 18, G 1/4.  
Bistable.  
Qn = 850 NI/min.



| Working pressure | Pilot pressure range | Code no.      |
|------------------|----------------------|---------------|
| -1 - 10 bar      | 1-10 bar             | 251 860 020 0 |

## 5/3 Valves

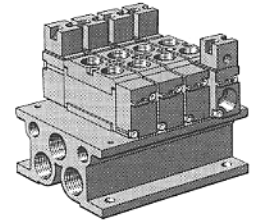
Series Compact 18, G 1/4.  
Qn = 850 NI/min.



| Working pressure | Mid.-pos | Code no.      |
|------------------|----------|---------------|
| -1 - 10 bar      | Closed   | 251 860 030 0 |
|                  | Open     | 251 860 040 0 |
|                  | Pressur. | 251 860 050 0 |

## Complete valve manifolds <sup>Info</sup>

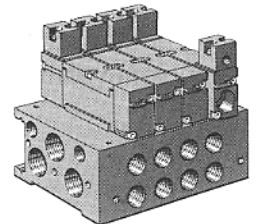
Series Compact 18.  
Manifold is ordered with an even no. of valves, 4-20 pcs.  
For ordering, see configurator on our homepage on Internet.



| Connection | Code no       |
|------------|---------------|
| Top, high  | 251 810 000 0 |
| Top, low   | 251 840 000 0 |

## Complete valve manifolds <sup>Info</sup>

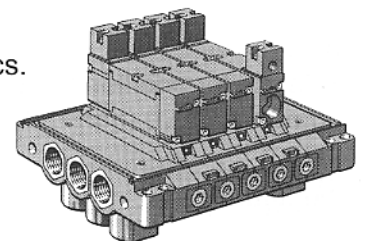
Series Compact 18.  
Manifold is ordered with an even no. of valves, 4-20 pcs.  
For ordering, see configurator on our homepage on Internet.



| Connection  | Code no       |
|-------------|---------------|
| On one side | 251 820 000 0 |

## Complete valve manifolds <sup>Info</sup>

Series Compact 18.  
Manifold is ordered with an even or uneven no. of valves, max 20 pcs.  
For ordering, see configurator on our homepage on Internet.



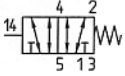
| Connection | Code no       |
|------------|---------------|
| Bottom     | 251 830 000 0 |

## 5/2 Unistable\*

Series Compact 18.

Valve prices

Code no. for addition to or as a spare for "Complete valve manifolds".



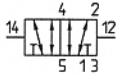
| Connection  | Code no       |
|-------------|---------------|
| On the top  | 251 819 010 0 |
| On one side | 251 829 010 0 |
| Bottom      | 251 839 010 0 |

## 5/2 Bistable\*

Series Compact 18.

Valve prices

Code no. for addition to or as a spare for "Complete valve manifolds".



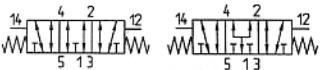
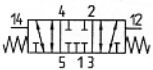
| Connection  | Code no       |
|-------------|---------------|
| On the top  | 251 819 020 0 |
| On one side | 251 829 020 0 |
| Bottom      | 251 839 020 0 |

## 5/3 Valves\*

Series Compact 18.

Valve prices

Code no. for addition to or as a spare for "Complete valve manifolds".



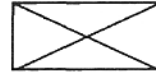
| Mid.-pos | Connection  | Code no.      |
|----------|-------------|---------------|
| Closed   | On the top  | 251 819 030 0 |
|          | On one side | 251 829 030 0 |
|          | Bottom      | 251 839 030 0 |
| Open     | On the top  | 251 819 040 0 |
|          | On one side | 251 829 040 0 |
|          | Bottom      | 251 839 040 0 |
| Pressur. | On the top  | 251 819 050 0 |
|          | On one side | 251 829 050 0 |
|          | Bottom      | 251 839 050 0 |

## Blanking plate\*

Series Compact 18.

Price blanking plate

Code no. for addition to or as a spare for "Complete valve manifold".



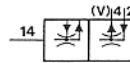
| Code no.      |
|---------------|
| 251 819 060 0 |

## Ejector unit\*

Series Compact 18

Price ejector unit

Code no. for addition to or as a spare for "Complete valve manifold".



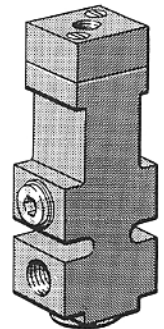
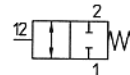
| Connection    | Code no       |
|---------------|---------------|
| On the top    | 273 541 100 0 |
| On the side   | 273 541 200 0 |
| On the bottom | 273 541 300 0 |

## 2/2 Valves\*

Series 306.

Normally closed.

Qn = 1500-4600 NI/min.

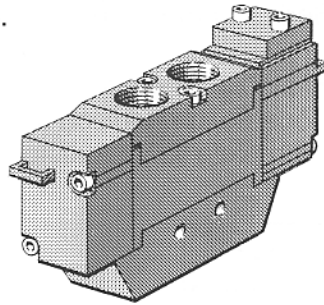


| Connection port | Control pressure range | Code no.      |
|-----------------|------------------------|---------------|
| G 1/4           | 3,2-10 bar             | 306 213 000 0 |
| G 1/2           | 3,5-10 bar             | 306 413 000 0 |



## 5/2 Valves

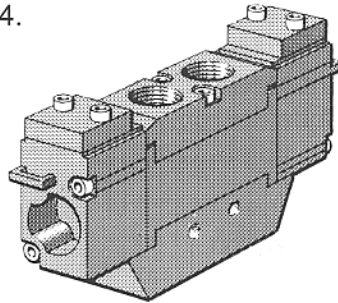
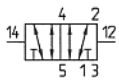
Series Compact 18, G 1/4.  
Unistable.  
Qn = 850 NI/min.



| Working pressure | Pilot pressure range | Code no.      |
|------------------|----------------------|---------------|
| -1 - 10 bar      | 3-10 bar             | 251 860 010 0 |

## 5/2 Valves

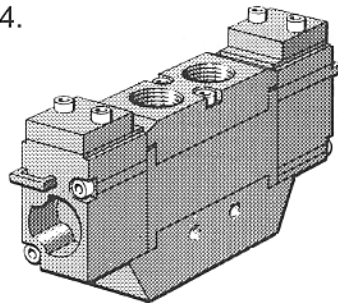
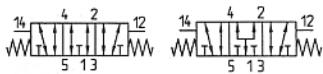
Series Compact 18, G 1/4.  
Bistable.  
Qn = 850 NI/min.



| Working pressure | Pilot pressure range | Code no.      |
|------------------|----------------------|---------------|
| -1 - 10 bar      | 1-10 bar             | 251 860 020 0 |

## 5/3 Valves

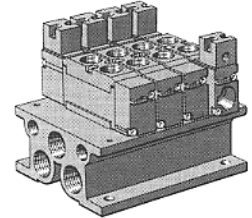
Series Compact 18, G 1/4.  
Qn = 850 NI/min.



| Working pressure | Mid.-pos | Code no.      |
|------------------|----------|---------------|
| -1 - 10 bar      | Closed   | 251 860 030 0 |
|                  | Open     | 251 860 040 0 |
|                  | Pressur. | 251 860 050 0 |

## Complete valve manifolds <sup>Info</sup>

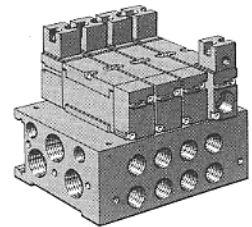
Series Compact 18.  
Manifold is ordered with an even no. of valves, 4-20 pcs.  
For ordering, see configurator on our homepage on Internet.



| Connection | Code no       |
|------------|---------------|
| Top, high  | 251 810 000 0 |
| Top, low   | 251 840 000 0 |

## Complete valve manifolds <sup>Info</sup>

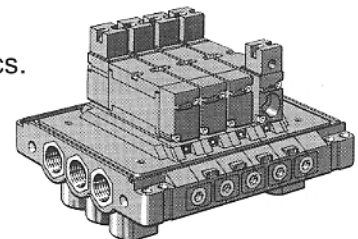
Series Compact 18.  
Manifold is ordered with an even no. of valves, 4-20 pcs.  
For ordering, see configurator on our homepage on Internet.



| Connection  | Code no       |
|-------------|---------------|
| On one side | 251 820 000 0 |

## Complete valve manifolds <sup>Info</sup>

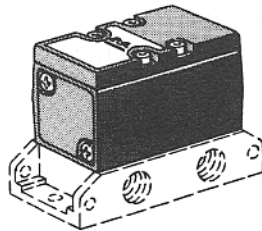
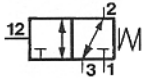
Series Compact 18.  
Manifold is ordered with an even or uneven no. of valves, max 20 pcs.  
For ordering, see configurator on our homepage on Internet.



| Connection | Code no       |
|------------|---------------|
| Bottom     | 251 830 000 0 |

## 3/2 Valves\*

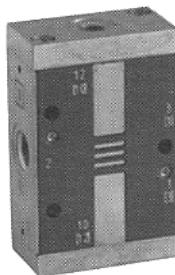
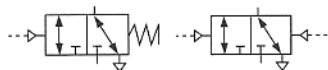
Series 563 - 567.  
 Qn = 1350-13620 NI/min.  
 Concerning manifold bases,  
 look at "Electrical valves"  
 Series 563 - 567.



| Connection port | Control pressure range | Code no.      |
|-----------------|------------------------|---------------|
| G 1/4           | 3,5 - 10 bar           | 563 201 000 0 |
|                 | 5,5 - 30 bar           | 563 231 000 0 |
|                 | 3,5 - 10 bar +120°C    | 563 251 000 0 |
| G 1/2           | 3,5 - 10 bar           | 565 201 000 0 |
|                 | 5,5 - 30 bar           | 565 231 000 0 |
|                 | 3,5 - 10 bar +120°C    | 565 251 000 0 |
| G 1             | 3,5 - 10               | 567 201 000 0 |
|                 | 5,5 - 30 bar           | 567 231 000 0 |
|                 | 3,5 - 10 bar +120°C    | 567 251 000 0 |

## 3/2 Valves

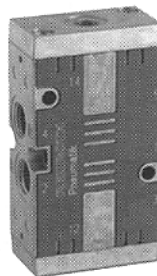
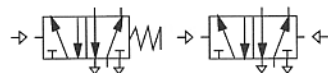
Type CD 7, G 1/4 and M14x1,5.  
 Qn = 1400 NI/min.



| Connection port | Pilot pressure range | Function  | Code no.      |
|-----------------|----------------------|-----------|---------------|
| G 1/4           | 3 - 10 bar           | Unistable | 571 040 010 0 |
| M 14x1,5        | 3 - 10 bar           | Unistable | 571 040 000 0 |
| G 1/4           | 2 - 10 bar           | Bistable  | 571 040 110 0 |
| M 14x1,5        | 2 - 10 bar           | Bistable  | 571 040 100 0 |

## 5/2 Valves

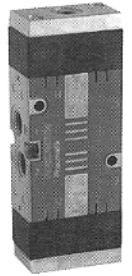
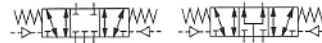
Type CD 7, G 1/4 and M14x1,5.  
 Qn = 1200 NI/min.



| Connection port | Pilot pressure range | Function  | Code no.      |
|-----------------|----------------------|-----------|---------------|
| G 1/4           | 3 - 10 bar           | Unistable | 571 050 010 0 |
| M14x1,5         | 3 - 10 bar           | Unistable | 571 050 000 0 |
| G 1/4           | 2 - 10 bar           | Bistable  | 571 050 110 0 |
| M14 x1,5        | 2 - 10 bar           | Bistable  | 571 050 100 0 |

## 5/3 Valves

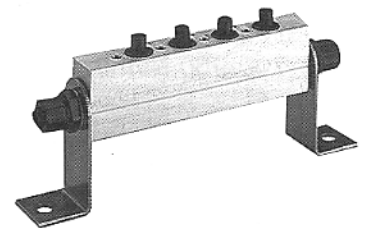
Type CD 7, G 1/4.  
 3-way control.  
 Qn = 900 NI/min.



| Connection port | Pilot pressure range | Intermediate position | Code no.      |
|-----------------|----------------------|-----------------------|---------------|
| G 1/4           | 3 - 10 bar           | Supplied              | 571 050 210 0 |
|                 | 3 - 10 bar           | Open exhaust          | 571 050 211 0 |
|                 | 3 - 10 bar           | Closed                | 571 050 212 0 |

## Accessories\*

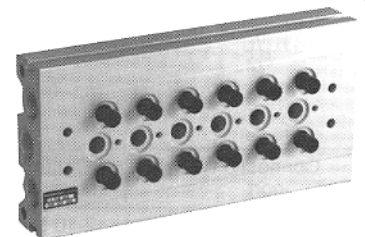
for CD 7, G 1/4.  
 P-manifold  
 for 5/2- and 5/3 valves.



| Connection port | No. of valves | Code no.      |
|-----------------|---------------|---------------|
| G 1/4           | 2             | 333 712 022 2 |
|                 | 3             | 333 712 023 2 |
|                 | 4             | 333 712 024 2 |
|                 | 5             | 333 712 025 2 |
|                 | 6             | 333 712 026 2 |
|                 | 7             | 333 712 027 2 |
|                 | 8             | 333 712 028 2 |
|                 | 9             | 333 712 029 2 |
|                 | 10            | 333 712 030 2 |
|                 | 11            | 333 712 031 2 |
|                 | 12            | 333 712 032 2 |

## Accessories\*

for CD 7, G 1/4.  
 Subplates  
 for 5/2- and 5/3- valves.

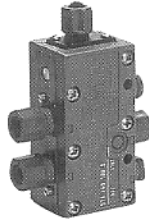
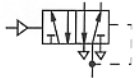


| Connection port | No. of valves | Code no.      |
|-----------------|---------------|---------------|
| G 1/4           | 4             | 898 507 204 2 |
|                 | 6             | 898 507 206 2 |
|                 | 8             | 898 507 208 2 |
|                 | 10            | 898 507 210 2 |
|                 | 12            | 898 507 212 2 |



## 5/2 Valves

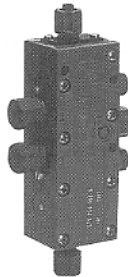
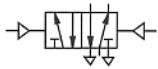
Type 740.  
Unistable.  
Qn = 700-950 NI/min.



| Connection port | Control pressure range | Code no.      |
|-----------------|------------------------|---------------|
| ∅ 10x1          | 1,5-10 bar             | 571 745 000 0 |
| ∅ 8x1           | 1,5-10 bar             | 571 740 000 0 |

## 5/2 Valves

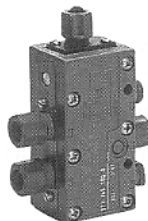
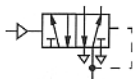
Type 740.  
Bistable.  
Qn = 700-950 NI/min.



| Connection port | Control pressure range | Code no.      |
|-----------------|------------------------|---------------|
| ∅ 8x1           | 1,5-10 bar             | 571 741 000 0 |
| ∅ 10x1          | 1,5-10 bar             | 571 746 000 0 |

## 5/2 Valves

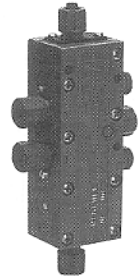
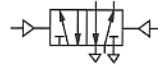
Type 740.  
Unistable, corrosion proof.  
Qn = 950 NI/min.



| Connection port | Control pressure range | Code no.      |
|-----------------|------------------------|---------------|
| ∅ 10x1          | 2-10 bar               | 571 745 100 0 |

## 5/2 Valves

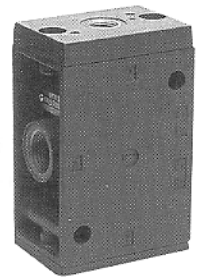
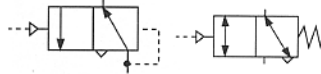
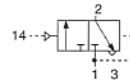
Type 740.  
Bistable, corrosion proof.  
Qn = 950 NI/min.



| Connection port | Control pressure range | Code no.      |
|-----------------|------------------------|---------------|
| ∅ 10x1          | 2-10 bar               | 571 746 100 0 |

## 3/2 Valves\*

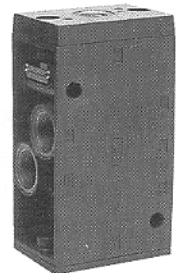
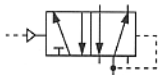
ND 12, G 1/2.  
Qn = 4000 NI/min.



| Connection port | Pilot pressure range | Function | Code no.      |
|-----------------|----------------------|----------|---------------|
| G 1/2           | 2 - 10 bar           | NC       | 571 110 010 0 |
|                 | 2 - 10 bar           | NO       | 571 110 015 0 |
|                 | 2 - 10 bar           | NC       | 571 110 030 0 |

## 5/2 Valves\*

ND 12, G 1/2.  
Qn = 4000 NI/min.

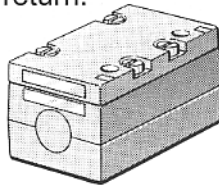
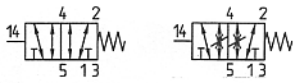


| Connection port | Pilot pressure range | Function  | Code no.      |
|-----------------|----------------------|-----------|---------------|
| G 1/2           | 2 - 10 bar           | Unistable | 571 100 010 0 |
|                 | 2 - 10 bar           | Unistable | 571 100 030 0 |
|                 | 2 - 10 bar           | Bistable  | 571 100 110 0 |

## 5/2 Valves

Series 581, ISO size 1 - 4.

Pressure operated with automatic return.

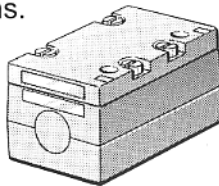
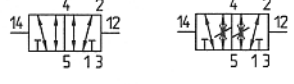


| Size  | Throttles | Flow | Code no.      |
|-------|-----------|------|---------------|
| ISO 1 | Without   | 1400 | 581 113 000 0 |
| ISO 1 | With      | 1400 | 581 113 100 0 |
| ISO 2 | Without   | 2700 | 581 213 000 0 |
| ISO 2 | With      | 2700 | 581 213 100 0 |
| ISO 3 | Without   | 4800 | 581 313 000 0 |
| ISO 3 | With      | 4800 | 581 313 100 0 |
| ISO 4 | Without   | 6000 | 581 413 000 0 |
| ISO 4 | With      | 6000 | 581 413 100 0 |

## 5/2 Valves

Series 581, ISO size 1 - 4.

Pressure operated in both positions.

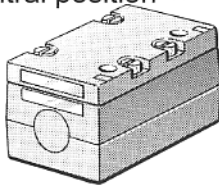
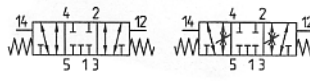


| Size  | Throttles | Flow | Code no.      |
|-------|-----------|------|---------------|
| ISO 1 | Without   | 1400 | 581 123 000 0 |
| ISO 1 | With      | 1400 | 581 123 100 0 |
| ISO 2 | Without   | 2700 | 581 223 000 0 |
| ISO 2 | With      | 2700 | 581 223 100 0 |
| ISO 3 | Without   | 4800 | 581 323 000 0 |
| ISO 3 | With      | 4800 | 581 323 100 0 |
| ISO 4 | Without   | 6000 | 581 423 000 0 |
| ISO 4 | With      | 6000 | 581 423 100 0 |

## 5/3 Valves

Series 581, ISO size 1 - 4.

Pressure operated with closed central position without throttle unit.

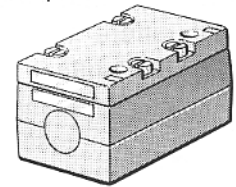
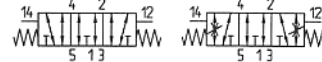


| Size  | Throttles | Flow | Code no.      |
|-------|-----------|------|---------------|
| ISO 1 | Without   | 1100 | 581 143 000 0 |
| ISO 1 | With      | 1100 | 581 143 100 0 |
| ISO 2 | Without   | 2100 | 581 243 000 0 |
| ISO 2 | With      | 2100 | 581 243 100 0 |
| ISO 3 | Without   | 4100 | 581 343 000 0 |
| ISO 3 | With      | 4100 | 581 343 100 0 |
| ISO 4 | Without   | 5000 | 581 443 000 0 |

## 5/3 Valves

Series 581, ISO size 1 - 4.

Pressure operated with open central position without throttle unit.

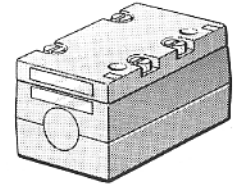
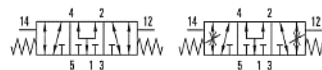


| Size  | Throttles | Flow | Code no.      |
|-------|-----------|------|---------------|
| ISO 1 | Without   | 1100 | 581 153 000 0 |
| ISO 1 | With      | 1100 | 581 153 100 0 |
| ISO 2 | Without   | 2100 | 581 253 000 0 |
| ISO 2 | With      | 2100 | 581 253 100 0 |
| ISO 3 | Without   | 4100 | 581 353 000 0 |
| ISO 3 | With      | 4100 | 581 353 100 0 |
| ISO 4 | Without   | 5000 | 581 453 000 0 |
| ISO 4 | With      | 5000 | 581 453 100 0 |

## 5/3 Valves

Series 581, ISO size 1 - 4.

Pressurized central pos.

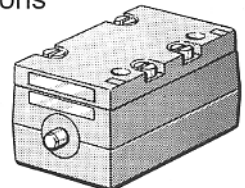
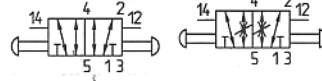


| Size  | Throttles | Flow | Code no.      |
|-------|-----------|------|---------------|
| ISO 1 | Without   | 1100 | 581 173 000 0 |
| ISO 1 | With      | 1100 | 581 173 100 0 |
| ISO 2 | Without   | 2100 | 581 273 000 0 |
| ISO 2 | With      | 2100 | 581 273 100 0 |
| ISO 3 | Without   | 4100 | 581 373 000 0 |
| ISO 3 | With      | 4100 | 581 373 100 0 |
| ISO 4 | Without   | 5000 | 581 473 000 0 |
| ISO 4 | With      | 5000 | 581 473 100 0 |

## 5/2 Valves

Series 581, ISO size 1 - 4.

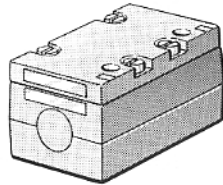
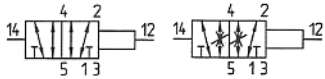
Pressure operated in both positions and manual switching.



| Size  | Throttles | Flow | Code no.      |
|-------|-----------|------|---------------|
| ISO 1 | Without   | 1400 | 581 133 000 0 |
| ISO 1 | With      | 1400 | 581 133 100 0 |
| ISO 2 | Without   | 2700 | 581 233 000 0 |
| ISO 2 | With      | 2700 | 581 233 100 0 |
| ISO 3 | Without   | 4800 | 581 333 000 0 |
| ISO 3 | With      | 4800 | 581 333 100 0 |
| ISO 4 | Without   | 6000 | 581 433 000 0 |

## 5/2 Valves

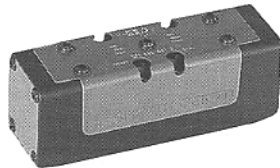
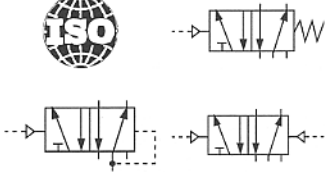
Series 581, ISO size 1 - 4.  
Pressure operated in both positions  
with differential spool.  
Signal 14 has priority.



| Size  | Throttles | Flow | Code no.      |
|-------|-----------|------|---------------|
| ISO 1 | Without   | 1400 | 581 163 000 0 |
| ISO 1 | With      | 1400 | 581 163 100 0 |
| ISO 2 | Without   | 2700 | 581 263 000 0 |
| ISO 2 | With      | 2700 | 581 263 100 0 |
| ISO 3 | Without   | 4800 | 581 363 000 0 |
| ISO 3 | With      | 4800 | 581 363 100 0 |
| ISO 4 | Without   | 6000 | 581 463 000 0 |
| ISO 4 | With      | 4800 | 581 463 100 0 |

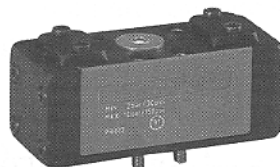
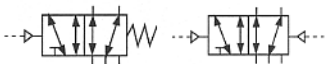
## 5/2- and 5/3- valves ISO 1-3 Info

Spool of ceramic.  
Insensitive to polluted air.  
Quoted on request.



## 5/2 Valves\*

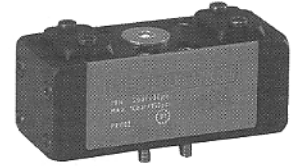
ISO CD size 1.  
Qn = 1400 NI/min.



| Connection port | Pilot pressure range | Function  | Code no.      |
|-----------------|----------------------|-----------|---------------|
| ISO 1           | 3-10 bar             | Unistable | 571 400 400 0 |
| ISO 1           | 2-10 bar             | Bistable  | 571 400 402 0 |

## 5/3 Valves\*

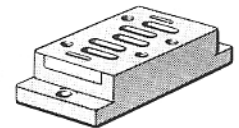
ISO CD size 1.  
Qn = 1000-1150 NI/min.  
ISO CD size 3, quoted on request.



| Connection port | Pilot pressure range | Intermediate position | Code no.      |
|-----------------|----------------------|-----------------------|---------------|
| ISO 1           | 3 - 10 bar           | Pressur.              | 571 400 430 0 |
|                 | 3 - 10 bar           | Open                  | 571 400 431 0 |
|                 | 3 - 10 bar           | Closed                | 571 400 432 0 |

## Single manifold base

ISO 5599-1, size 1-4.  
Rear ported.



| Size  | Connection port | Control connection | Code no.      |
|-------|-----------------|--------------------|---------------|
| ISO 1 | G 1/8           | G 1/8              | 580 170 000 0 |
| ISO 1 | Ø 6             | Ø 4                | 580 180 000 0 |
| ISO 2 | G 1/4           | G 1/8              | 580 270 000 0 |
| ISO 2 | Ø 8             | Ø 6                | 580 280 000 0 |
| ISO 3 | G 3/8           | G 1/8              | 580 370 000 0 |
| ISO 4 | G 1/2           | G 1/8              | 580 470 000 0 |

## Single manifold base

ISO 5599, size 1-4.  
VDMA form B.  
Rear ported.

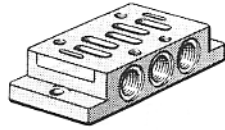


| Size  | Connection port | Code no.      |
|-------|-----------------|---------------|
| ISO 1 | 1/4             | 898 504 111 4 |
| ISO 2 | 3/8             | 898 504 121 4 |
| ISO 3 | 1/2             | 898 504 131 4 |
| ISO 4 | 3/4             | 898 504 141 4 |

## Single manifold base

ISO 5599-1, size 1-4.

Side ported.



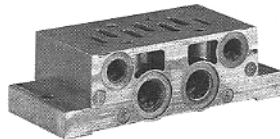
| Size  | Connection port | Control connection | Code no.      |
|-------|-----------------|--------------------|---------------|
| ISO 1 | G 1/8           | G 1/8              | 580 171 000 0 |
|       | G 1/4           | G 1/8              | 580 174 000 0 |
|       | Ø 6             | Ø 4                | 580 181 000 0 |
|       | Ø 8             | Ø 6                | 580 177 000 0 |
| ISO 2 | G 1/4           | G 1/8              | 580 271 000 0 |
|       | G 3/8           | G 1/8              | 580 274 000 0 |
|       | Ø 8             | Ø 6                | 580 281 000 0 |
| ISO 3 | G 3/8           | G 1/8              | 580 371 000 0 |
| ISO 4 | G 1/2           | G 1/8              | 580 471 000 0 |

## Single manifold base

ISO 5599-1, size 1-4.

VDMA form A.

Side ported.

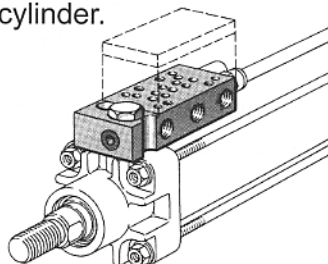


| Size  | Connection port | Code no.      |
|-------|-----------------|---------------|
| ISO 1 | G 1/4           | 898 504 110 4 |
| ISO 2 | G 3/8           | 898 504 120 4 |
| ISO 3 | G 1/2           | 898 504 130 4 |
| ISO 4 | G 3/4           | 898 504 140 4 |

## Accessories

ISO 5599-1, size 1-2.

For mounting directly on cylinder.



| Size  | Connection port | Code no.      |
|-------|-----------------|---------------|
| ISO 1 | 1/4             | 580 169 000 0 |
| ISO 2 | 3/8             | 580 269 000 0 |